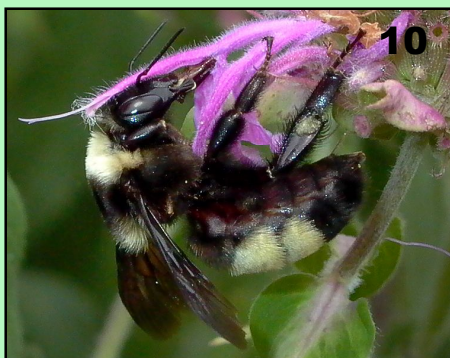
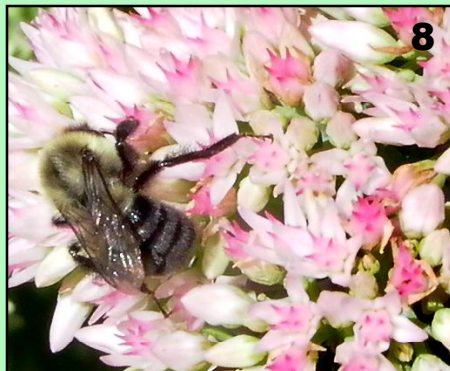




INSECTS in the GARDEN



Most people know that bees are super pollinators, but do you know that some flies are excellent pollinators too? In fact, **syrphid flies** (aka **flower flies** or **hover flies**) are better at pollinating some fruit than native bees. Syrphid flies confuse potential predators by mimicking the look of bees and wasps. But, do not be fooled: they have only two wings, big compound eyes and stubby antennae. And, they do NOT sting!



Pictures courtesy of Mary Free, MGNV:

1. syrphid fly and bumble bee on *Coreopsis*;
2. syrphid fly (*Toxomerus geminatus*) on *Sedum kamtschaticum*;
3. syrphid fly (*Allograpta obliqua*) on *Hypericum xmoseranum* 'Tricolor';
4. syrphid fly (*Mallota*) on *Sedum*;
5. European honey bees on *Abelia*;
6. eastern carpenter bee on *Sedum* 'Autumn Joy';
7. syrphid fly (*Eristalis transversa*) on *Rudbeckia*;
8. common eastern bumble bee on *Sedum* 'Autumn Joy';
9. sweat bee on *Sedum*;
10. black-and-gold bumble bee on *Monarda*.

For insect ID & info visit: www.BugGuide.net