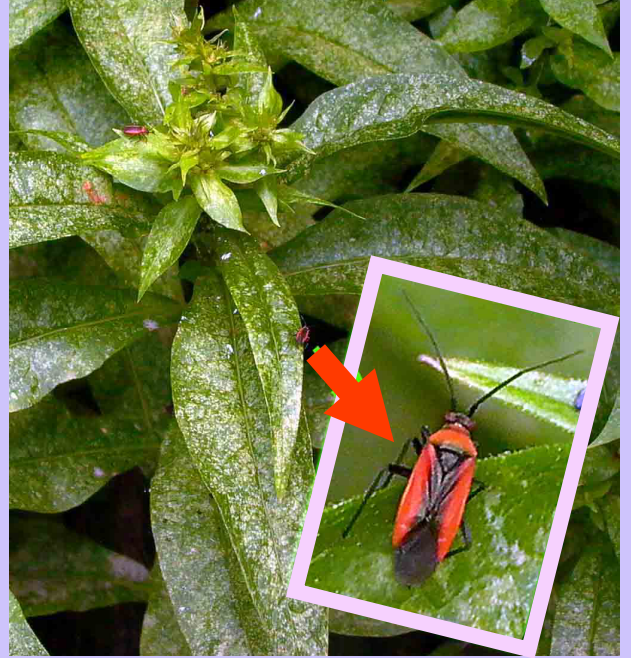




INSECTS in the GARDEN



Is that a beneficial spider hiding beneath the phlox petal (above left)? Has it captured the destructive phlox plant bug (adult, above right)?

White Flower Spider (close-up pictures below)

Sometimes changing color to blend in with flowers on which it hides, this crab spider (note resemblance with front legs outstretched) ambushes insect pests (and sometimes bees). After catching prey with its front legs, it paralyzes its captive with venom (not known to be particularly dangerous to humans) and sucks it dry. It uses its silk to protect its eggs rather than to weave a web.

Phlox Plant Bug

This red and black, plant-specific **pest** feeds on summer phlox buds and foliage, which becomes spotted (see damage above to the Shade Garden phlox in 2011). Plants can die with severe infestations. Eggs overwinter in dead stems, so cut down all of the plants, bag them up and dispose of them in the trash. The following season, there should be fewer phlox plant bugs. However, when nymphs first appear, control them by hand-crushing, spraying with water to knock them off of the plants or using insecticidal soap.



© Mary Free