



HELPDESK HIGHLIGHTS

Weekly newsletter for Master Gardeners

WEEK 3: JULY 17-24

IN THIS ISSUE:

Lace Bugs: Pages 2-4

Verticillium Wilt of Trees and Shrubs: Pages 4-6

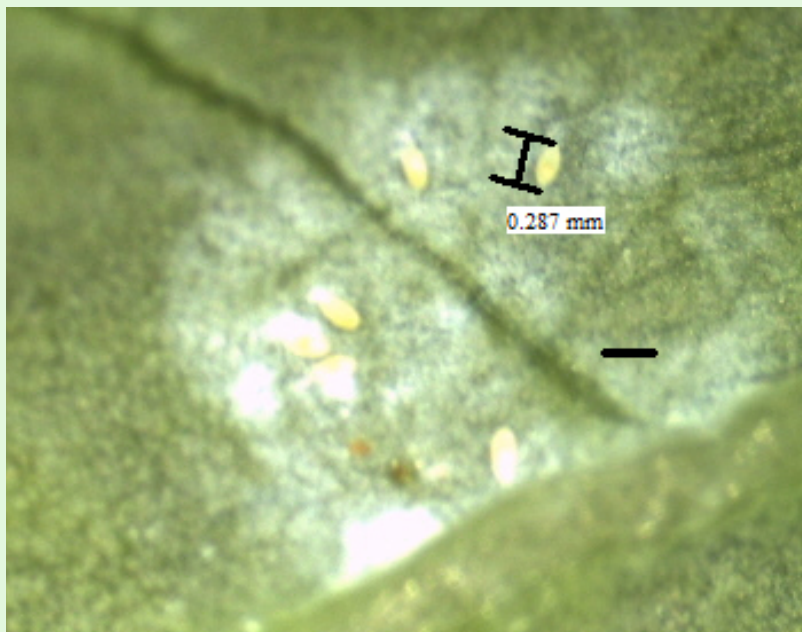
Hydrangea Anthracnose: Pages 7-8

TEST YOUR MASTER GARDENER SKILLS

(Answer on page 8)

Identify these white spots on a Mustard Green Leaf!

IMAGE FROM HELPDESK



Please refer only to the current [VCE Pest Management Guide: Home Grounds and Animals](#) for pesticide recommendations. All pesticides recommended are at the risk of the user. Read and follow all label instructions for use, storage, and disposal. Remember, the pesticide label is the law.

LACE BUGS



IMAGE FROM RUTGERS UNIVERSITY
OAK LACE BUG EGGS



IMAGE FROM
UNIVERSITY OF
FLORIDA
AZALEA LACE BUG



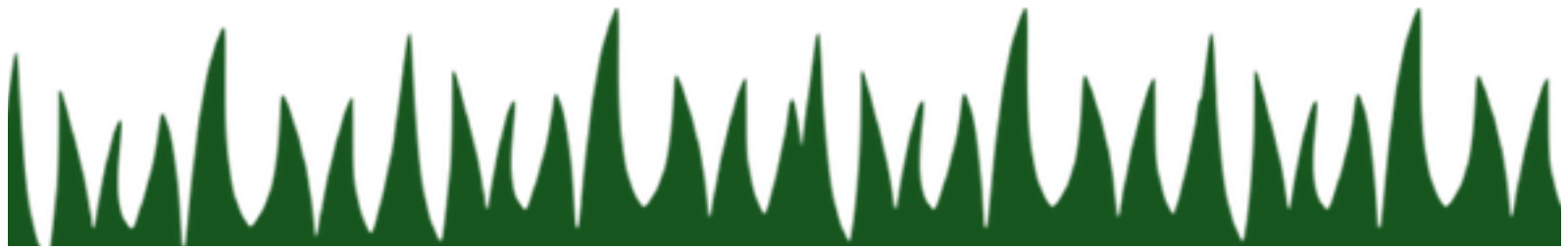
IMAGE FROM
UNIVERSITY OF
CALIFORNIA,
IRVINE
SYCAMORE
LACE BUG



IMAGE FROM UNIVERSITY OF FLORIDA
AZALEA LACE BUG DAMAGE

Symptoms:

- Yellow spots on upper leaf surfaces that seem to look like mite damage but with bigger spots
- Severe feeding results in grayish blotches or completely brown leaves
- Brown varnish type droppings on the leaf's underside



LACE BUGS (CONT.)

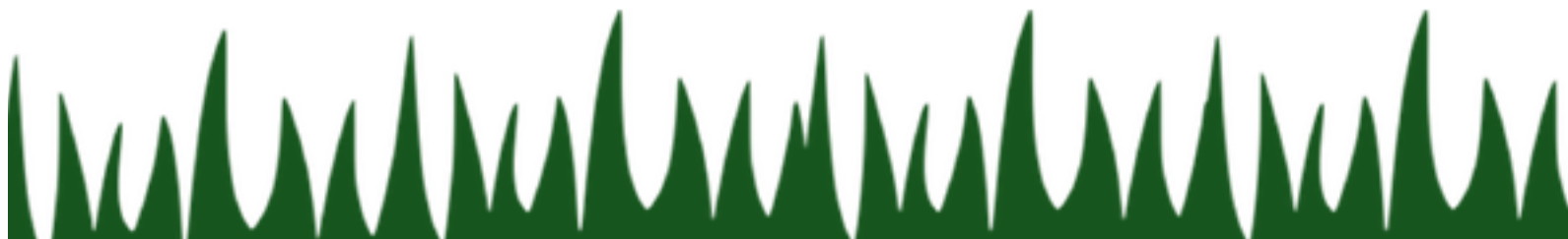
Relevance: Eggs hatch in May and 1-2 generations occur by the summer's end

Knowing the plant species will help you identify the lace bug species. Below is a list of common lace bug and their respective host plants. Those bolded are the ones most prevalent in Virginia.

Andromeda Lace Bug	Japanese Andromeda
Azalea Lace Bug	Azalea and mountain laurel
Rhododendron Lace Bug	Rhododendron and mountain laurel
Alder Lace Bug	Alder, hazel, elm, birch, and crabapple
Brasswood Lace Bug	Brasswood and linden
Birch Lace Bug	Yellow birch, white birch, beech, willow, mountain ash, maple and eastern hophornbeam
Buckeye lace bug	Buckeye
Elm lace bug	American elm
Hackberry lace bug	Hackberry
Hawthorn lace bug	Hawthorn, quince, pyracantha, cotoneaster, and serviceberry
Oak lace bug	Oak
Sycamore lace bug	Sycamore and London plane tree
Walnut lace bug	Black walnut, butternut, and linden
Willow and poplar lace bug	Willow, balsam poplar, bigtooth aspen, and quaking aspen
Willow lace bug	Willow

Description: adults are 1/8" to 1/4" inch long with a netlike pattern on the wings. In addition, their wings are dotted with brown and black. Lace bug eggs are elongated and cylindrical shapes.

Damage to Plants: Lace bug feeding is directly harmful to plants



Best Control Methods:

- Monitor plants regularly in spring for lace bug signs
- Plant Azalea and Rhododendron in a shady area to avoid heavy lace bug populations

More Resources for Lace Bug Control

[VCE Pest Management Guide: Home Grounds and Animals](#)

[VCE Extension: Lace Bugs](#)

[UMD Extension: Lace Bugs](#)

[Penn State Extension: Lace Bugs on Broad-Leaved Evergreen Ornamental Plants](#)

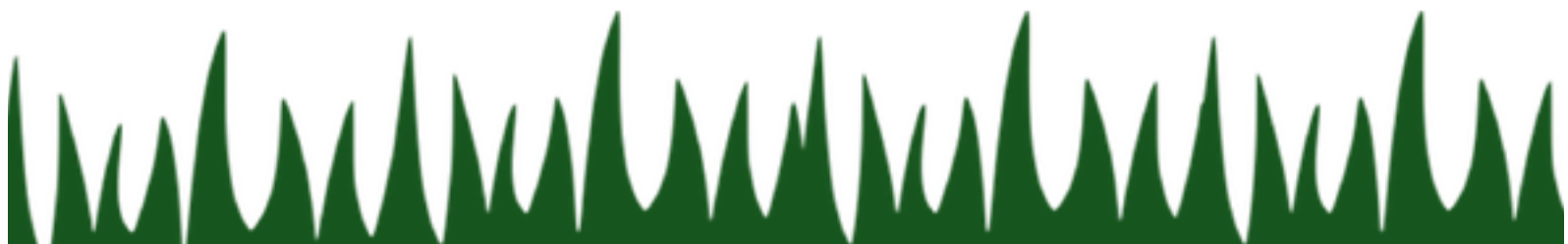
[Penn State Extension: Lace Bug on Deciduous Woody Ornamental Plants](#)

VERTICELLIUM WILT OF TREES AND SHRUBS

Relevance: Symptoms of disease are more apt to appear in July and August

Why: Caused by soil-borne fungi, *Verticillium albo-atrum* and *Verticillium dahliae*. The fungus is common in many soils but prefers certain hosts that include trees, shrubs and even vegetables especially the tomato plant. Below is a table of common trees and shrubs susceptible to Verticillium Wilt.

Ash	Maple	Honeysuckle	Russian Olive	Smoke tree
Azalea	Elm	Linden	Plum	Spirea
Japanese Barberry	Dogwood	Black Locust	Redbud	Sumac
Catalpa	Elder	Magnolia	Rose	Viburnum
Cherry, other stone fruits	Currant and Gooseberry	Kentucky Coffee Tree	Oak, pine and red (rare)	Weigela



Damage to Plants: Serious disease since the fungi spreads internally or systematically within the plant and can lead to plant death

Symptoms

- Small, yellow foliage
 - Leaf scorch (marginal browning)
 - Slow growth
 - Abnormally heavy seed crops
 - Often one branch/side/section is affected
 - Some exhibit elongate, dead areas of bark on diseased branches/trunks
- Dieback of shoots and branches
 - Leaf curling, drying
 - Abnormal red or yellow color of leaves or in areas between leaf veins, partial defoliation, wilting and branch dieback
 - In wilting branches, there are discolored streaks in bark
 - a) Green to black in maples
 - b) Brown in elms
 - c) Brown to black in black locust and other trees



IMAGE FROM PURDUE UNIVERSITY
VERTICELLIUM ON MAPLE university

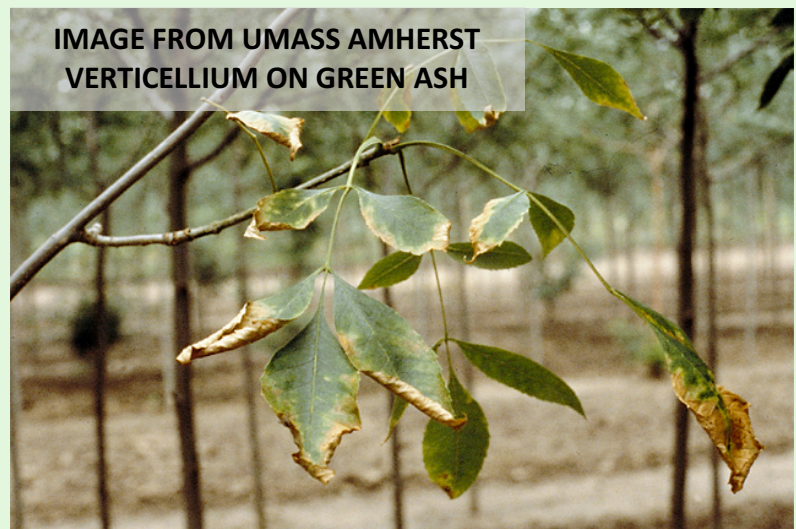


IMAGE FROM UMASS AMHERST
VERTICELLIUM ON GREEN ASH

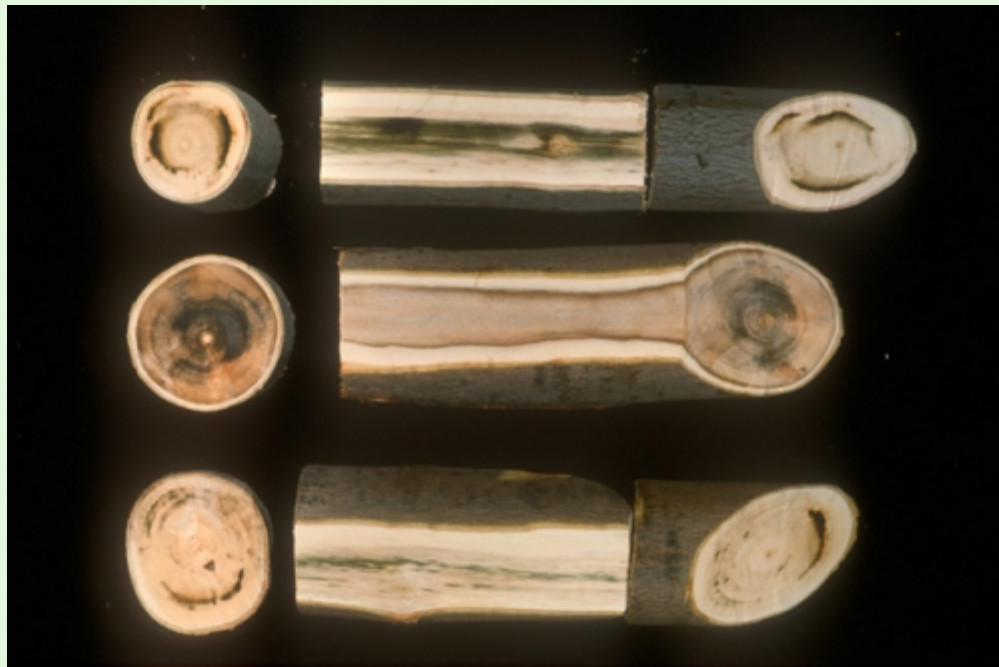


IMAGE FROM
MICHIGAN STATE
UNIVERSITY
Verticillium on Norway
maple with green
discoloration

Best Control Methods

- Do not replant susceptible species where a specimen was killed by Verticillium Wilt
- Prune out affected limbs; water and fertilize to maintain tree vigor
- Never use wood chips taken from a Verticillium infected tree as mulch or potting medium
- To prevent spread, disinfect tools

More Resources for Verticillium Wilt Control

[University of Minnesota Extension: *Verticillium wilt of trees and shrubs*](#)

[Penn State Extension: *Verticillium Wilt of Woody Ornamentals*](#)

[Missouri Botanical Garden: *Verticillium Wilt*](#)

HYDRANGEA ANTHRACNOSE



IMAGES FROM THE MASTER GARDENER COORDINATOR
ANTHRACNOSE ON HYDRANGEAS

Relevance: Hydrangea anthracnose favors hot and wet conditions.

Why: Caused by the fungus *Collectotricbum gloeosporioides*, which can attack both the leaves and blooms of the hydrangea. **Heavily fertilized hydrangeas** may be most susceptible to attack by *C.gloeosporioides*.

Symptoms:

- Circular or irregularly shaped brown spots
- Spots turn from light brown to tan
- Spots have a bull's eye appearance
- Spots become angular once they have reached large leaf veins

Best Control Methods:

Collect and discard diseased blooms and leaves

Taking cuttings from symptom-free plants will prevent spread

Limit your time gardening in wet conditions since spores primarily spread through splashing water

More Resources for Hydrangea Anthracnose:

[Alabama Cooperative Extension System: Diseases of Hydrangea](#)

[Tennessee State University: Foliar Diseases of Hydrangeas](#)

[Pest Management Guide: Home Grounds and Animals](#)

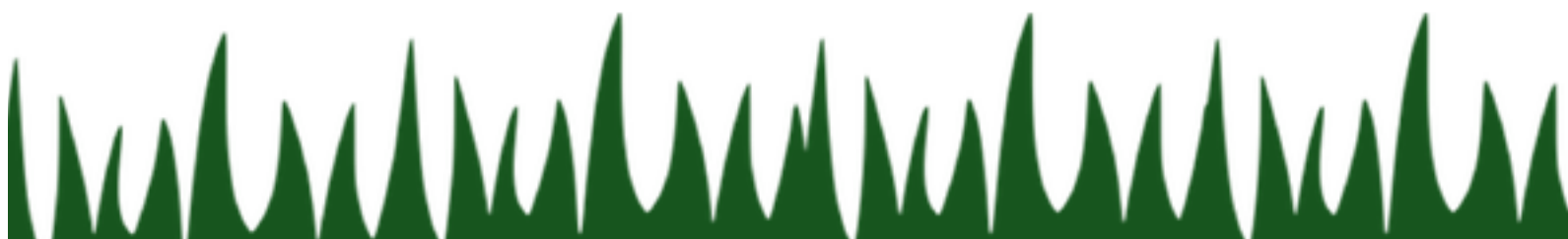
TEST YOUR MASTER GARDENER SKILLS

Answer: The white spots are Aphid eggs and larvae!

Aphids are soft-bodied insects that are mainly green or black. However, there are hundreds of species and these “plant lice” can also be lavender, gray, brown, pink, red or yellow. A common characteristic between all species is the presence of two tubes, called cornicles, on the back ends of their bodies.

Aphids feed in clusters and generally prefer to feed on new, succulent shoots or leaves. Light infestations are usually harmless to the plants but heavy infestations can result in:

- Leaf curl
- Wilting
- Stunting of shoot growth
- Delay in fruit/flower production
- A transmission of pathogens to plants
- Honeydew (aphid excrement) buildup which can lead to sooty mold



Best Control Methods:

Maintain plant vigor

Plant flowers that attract beneficial predators like Lady Beetles, lacewings, damsel bugs, flower fly maggots, certain parasitic wasps, and birds

More Resources for Controlling Aphids:

[VCE Extension: Aphids](#)

[Oregon State Extension: How to control aphids with less toxic methods](#)

[Permaculture Research Institute: Plants that Attract Beneficial Insects](#)

[Pest Management Guide: Home Grounds and Animals](#)

THANK YOU FOR READING!



Virginia Cooperative Extension

Virginia Tech • Virginia State University

www.ext.vt.edu

Virginia Cooperative Extension programs and employment are open to all, regardless of age, color, disability, gender, gender identity, gender expression, national origin, political affiliation, race, religion, sexual orientation, genetic information, veteran status, or any other basis protected by law. An equal opportunity/affirmative action employer. Issued in furtherance of Cooperative Extension work, Virginia Polytechnic Institute and State University, Virginia State University, and the U.S. Department of Agriculture cooperating. Edwin J. Jones, Director, Virginia Cooperative Extension, Virginia Tech, Blacksburg; Jewel E. Hairston, Administrator, 1890 Extension Program, Virginia State, Petersburg.

