


Controlling Invasive Plants

94

Controlling Ground Covers

- Hand pull when soil is moist
- Start from one side, working a small section at a time
- Pry up soil and break apart, removing roots
- Leave soil loose to dry out small roots left behind
- Bag and discard to prevent any re-rooting
- Replant with native species



95

Removing English Ivy from Ground

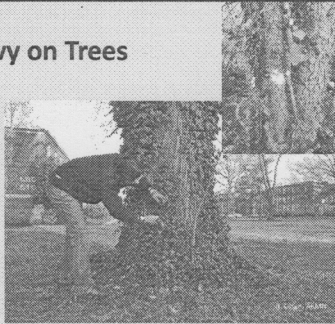
- Use team approach
- One person digs soil with shovel at 45° angle
- One person rolls up loosened ivy
- Let vines dry out and shake off soil
- Bag and dispose of in trash
- Replant with native species



96

Controlling English Ivy on Trees

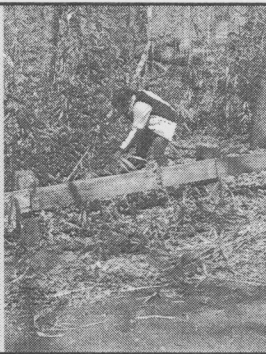
- Cut runners at 2-3 feet up trunk
- Gently peel runners down to tree roots
- Continue to remove 3-6 feet from ground at base of trunk
- Allow remaining ivy to die and blow away
- Bag cut sections and place in trash



97

Controlling Bamboo

- Cut stalks or mow emerging shoots to ground regularly
- It can take 3 years to deplete plant and kill stand
- **OR** dig down at least 1 foot to remove roots
- Plants can renew from lingering rhizomes
- Repeat digging newly emerging shoots for up to a year



98

Controlling Vines

- Hand pull small plants, removing as many roots as possible
- Cut fruit to prevent reseeding
- Cut large vines at base and dig up roots, if possible
- If necessary, use spot application of minimal amount of herbicide on cut
- Bag and dispose of in trash
- Monitor and repeat, as necessary



99
