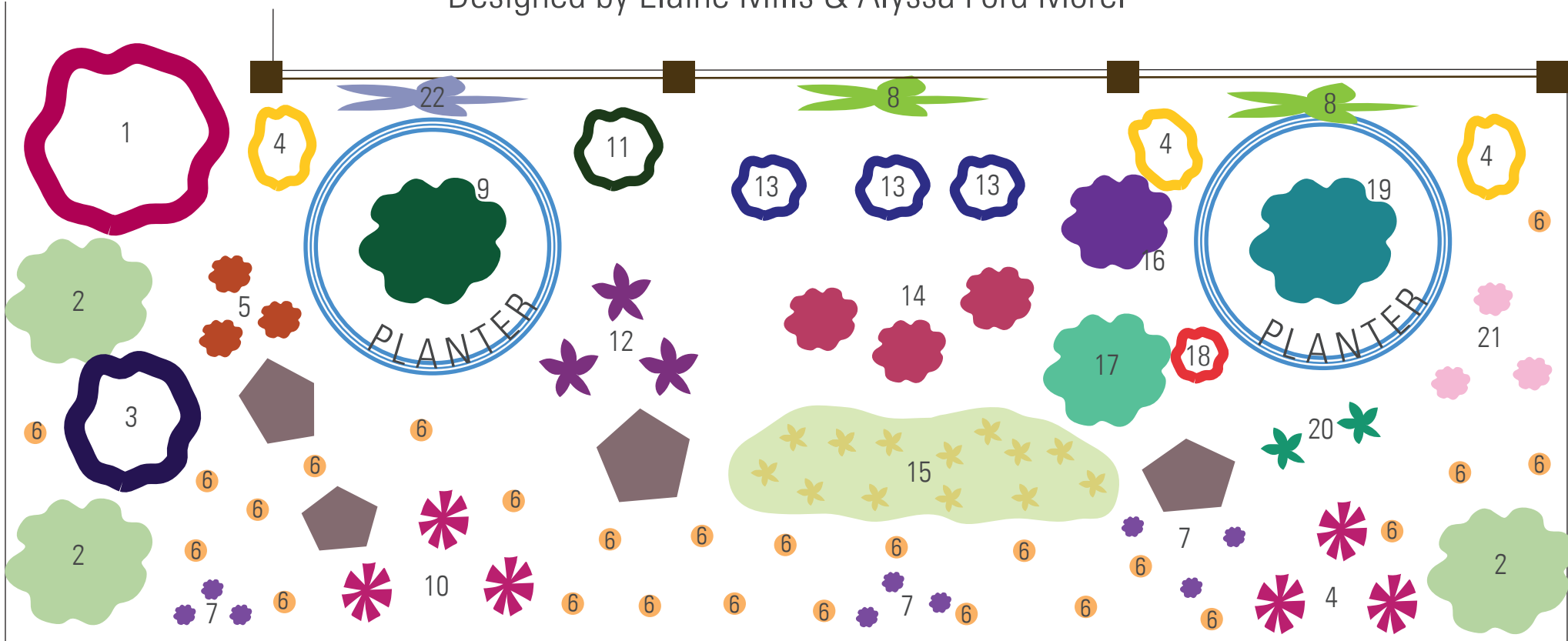


Large Sunny Bed

Designed by Elaine Mills & Alyssa Ford Morel



Designers' Statement:

"This bed was envisioned as a modern mix of locally native perennials and vines combined with edibles, both herbs and fruits. Most are perennial but some will be replanted each year. The native plants were chosen to provide beauty, support for pollinators, and to echo the adjacent bed. The two beds work either together or separately."

-Alyssa Ford Morel & Elaine Mills

Large Sunny Bed Plant List

1. *Monarda fistulosa* (Wild Bergamot)

Lavender flowers, blooms Jun-Sep; 2-4' x 2-3'

2. *Symphyotrichum ericoides* 'Snow Flurry' (Dwarf Heath Aster)

White flowers, blooms late summer- fall; 6-8 x 2-4'

3. *Vernonia lettermanii* 'Iron Butterfly' (Lettermann's Ironweed)

Purple flowers, blooms Jul-Aug; 2-3' x 2-3'

4. *Panicum virgatum* 'Shenandoah' (Switchgrass)

Reddish-pink flowers, blooms/seed heads Sep-Feb; 3' x 2'

5. *Asclepias tuberosa* (Butterfly-weed)

Orange flowers, blooms Jun-Aug; 1-3' x 12-18"

6. *Fragaria virginiana* (Wild Strawberry)

White flowers, blooms April-June; 4"-7" x 1-2'

7. *Crocus sativus* (Saffron Crocus)

Bulb, purple flowers, fall blooming, 8-12" tall

8. *Lonicera sempervirens* 'John Clayton' (Trumpet Honeysuckle)

Blooms Apr-Jun & intermittently until frost; semi-evergreen; 8-20' x 6-12'

9. *Mentha spicata* (Spearmint)

Pinkish white flowers, blooms Jul-Sept; edible; 1-3' tall

10. *Silene caroliniana* (Wild Pink)

Yellow flowers, blooms Apr-Jun; evergreen; 12-18" x 12-18"

11. *Eupatorium hyssopifolium* (Hyssoleaf Thoroughwort)

White flowers, blooms June- Oct; 2-4' tall

12. *Liatris microcephala* (Dwarf Gayfeather)

Purple flowers, blooms Jul-Oct; 2' x 1'

13. *Symphyotrichum novae-angliae* (New England Aster)

Purple flowers, blooms Aug-Oct; 3-6' tall

14. *Penstemon digitalis* 'Husker Red' (Beardtongue)

White flowers, blooms Apr-Jun; basal rosette evergreen; 2-3' x 1-2'

15. *Zizia aurea* (Golden Alexanders)

Yellow flowers, blooms May-Jun; 1-2' tall

16. *Vernonia noveboracensis* (New York Ironweed)

Pink/Purple flowers, blooms Aug-Sep; 3-6' tall

17. *Salvia officinalis* (Sage)

Pink/Purple flowers, blooms May-June; edible, 18-24"

18. *Salvia elegans* (Pineapple Sage)

Red flowers, blooms late summer; edible; Sep-Feb; 3-4' x 3-4'

19. *Salvia rosmarinus* (Rosemary)

Blue flowers, blooms March-April; edible; 3-6' x 2-4'

20. *Petroselinum crispum* (Parsley)

Biennial, white flowers, blooms June-Aug; Edible; 2' x 1'

21. *Phlox paniculata* 'Jeana' (Garden Phlox)

Deep pink flowers, blooms Jul-Sep; 2-4' x 1-3'

22. *Ficus carica* 'Brown Turkey' (Brown Turkey Fig)

Fruiting Tree; mature size of 10 to 30 feet tall and wide