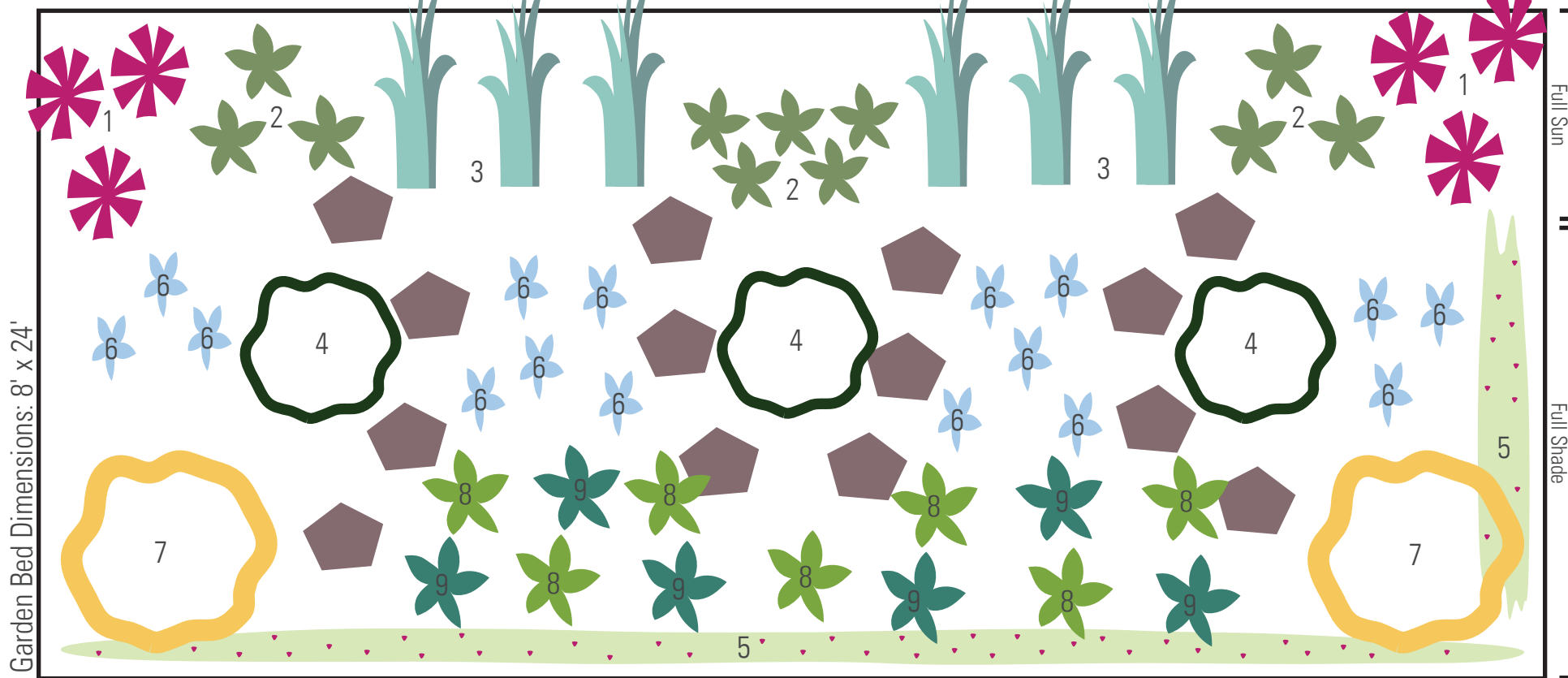


Formal Native Plant Foundation Bed

Garden design by Angela McNamara and Leslie Cameron



Garden Bed Dimensions: 8' x 24'

Full Sun

Full Shade

1. *Liatrix spicata* (Blazing Star)

1-4' tall, 1-1.5' wide, purple spiky flowers Jul-Sep

2. *Chelone glabra* (White Turtlehead)

1-4' tall, 1.5-2.5' wide, white-pink flowers Jul-Oct

3. *Schizachyrium scoparium* (Little Bluestem)

Grass, winter interest, 1.5-4' tall, 1.5-2' wide, blue-green leaves, purple-bronze flowers Aug-Oct

4. *Amelanchier arborea* (Downy Serviceberry)

Deciduous tree, 15-25' tall and wide, white flowers Mar-Apr, edible fruit May-Jun

5. *Fragaria virginiana* (Native Scarlet Strawberry)

Groundcover, white flowers in Apr, edible berries in Jun

6. *Iris virginica* (Virginia or Southern Blue Flag)

1-3' tall, 1-2' wide, light blue to deep violet May-Jul

7. *Hypericum prolificum* (Shrubby St. John's Wort)

Deciduous shrub, 1-3' tall, yellow flowers Jun- Aug

8. *Carex plantaginea* (Plantain-leaved Sedge)

Evergreen sedge, .5-1' tall, 1-2' wide, maroon and green seedheads Mar-May

9. *Polystichum acrostichoides* (Christmas Fern)

Evergreen .5-2' tall 1-2' wide